

The
Stocker
FOUNDATION

559 Broadway Ave., 2nd Floor • Lorain, OH 44052

(440) 246-5719 • Fax (440) 246-5720

www.stockerfoundation.org

The
Stocker
FOUNDATION



2 0 0 3

Table of Contents

Mission

Strengthening communities where trustees reside.

Vision

To positively impact lives in the areas of art, education, health, social services and women's issues. The Stocker Foundation seeks creative ideas and projects, both new and existing, that serve as a catalyst for constructive change to help build strong communities, to strengthen families, to provide sound educational programs and vital human services.

Letter from the President
and Executive Director2

History of The Stocker Foundation3

Areas of Interest.....4

2002 – 2003 Grants Awarded

Arts & Culture5

Community Needs.....8

Education10

Health14

Social Services16

Women's Issues21

Information for Grant Seekers &
Grant Submission Guidelines23

Financial Information26

Foundation Staff

Patricia O'Brien
Executive Director

Dawn Golba, MSSA, LISW
Program Officer

Melanie R. Wilson
Grants & Office Manager

*Annual Report Design and Printing:
The Shamrock Companies, Inc.*

Letter from the President and Executive Director

The long-term effects of an economic downturn or bear market extend beyond the for profit business sector. While the impact may not be immediate, private family foundations are not immune. During the 2002–03 fiscal year, The Stocker Foundation’s Board made a conscious decision to maintain its grantmaking budget and not reduce its annual charitable payout below historic levels. While some may not consider this to be a strategic decision, we hope to continue making a difference while living in a world that is in constant flux.

This year, 155 competitive grant awards along with other distributions totaling \$2.1 million were approved. A few examples of programs that embody the Foundation’s mission are: **Food for Kids** (a program that provides backpacks filled with child friendly and nutritious food to elementary students in rural New Mexico); **Campus Pals** (a mentoring program that pairs University of Arizona students with disadvantaged youth in metro Tucson) and **LIDA**—Lorain County Individual Development Account (a program that empowers low to moderate income individuals to save for home ownership or a small business startup). The Stocker Foundation considers these types of direct service grants critical in a sluggish economy where layoffs and plant closings have been all too common and jobless rates have hit all time highs. A pie chart at the end of the report reveals that social service grant awards received 31-percent of available funds. However, the Foundation remains interested in programs that support the arts, community, education, health, youth leadership and women’s issues.

The Stocker Foundation is a private family foundation with approximate assets of \$47 million. A 10-member board governs the Foundation and is comprised solely of family members, including donor Beth K. Stocker who serves as President Emeritus. The Foundation is headquartered in Lorain, Ohio, yet many family members make their homes beyond those borders in such places as Arizona, New Mexico, California and Washington State. When a family member agrees to serve on the Board, his or her home-community is eligible to receive funding through a competitive grantmaking program. In 2002–03, The Stocker Foundation has served: two counties in Ohio (Lorain and Cuyahoga); one county in Arizona (Pima); two counties in New Mexico (Bernalillo and Doña Ana); and in one county in Washington State (King). Funding in so many different communities can be challenging, but also very rewarding. Since its inception in 1979, The Stocker Foundation’s competitive grantmaking program has distributed \$21 million.

After a year dominated by sometimes unpleasant national and international events, we look forward to the New Year: serving those communities where The Stocker Foundation has a funding presence, implementing a special grant program focused on literacy, Year Three implementation of the Foundation’s capacity building initiative, managed by Business Volunteers Unlimited and actively engaging the multiple generations of the Stocker family in the Foundation’s ongoing work.



Benjamin P. Norton
Board President



Patricia O'Brien
Executive Director

History of the Foundation

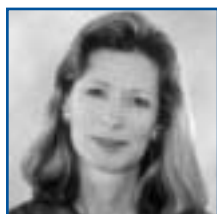
BOARD OF TRUSTEES



Beth K. Stocker
President Emeritus



Benjamin P. Norton
President



Anne Woodling
Treasurer



Nancy Woodling
Secretary



Jane Norton



Mary Ann Dobras



Dawn Dobras



Sue Woodling



Amy Dobras



Brent Norton

The Stocker Foundation is a private grantmaking foundation established in 1979 by Beth K. Stocker, from the estate of her husband, C. Paul Stocker.

During their life together, Paul and Beth Stocker incorporated their personal values with their philanthropic spirit of giving to the arts, education, youth and self-help for the disadvantaged and disabled. Upon establishing The Stocker Foundation, Beth Stocker, with the help of her three daughters, championed those interests and formulated the guiding principles of the Foundation. Over the years, other fields of interest have been added reflecting the priorities of the Trustees.

Paul Stocker, an electrical engineer and inventor, co-founded Lorain Products Corporation in 1936. Under his leadership, Lorain Products grew from a one room operation to a multi-plant manufacturing facility of telecommunications equipment. It maintained a worldwide reputation for quality products, service and dependability in the telephone industry. Upon Mr. Stocker's retirement in 1973, Lorain Products Corporation became a subsidiary of Reliance Electric. During the last thirty years, the company has experienced several mergers and acquisitions. It has continued to maintain an engineering and manufacturing presence serving the telecommunications global marketplace.

Areas OF Interest

Arts & Culture

The Stocker Foundation believes art can enrich quality of life, stimulate new ideas and nurture existing talents. The Foundation supports fine art programs in all mediums (dance, drama, music, creative writing, and visual arts) that provide school aged children and community members with access.

Community Needs

The Stocker Foundation supports the concept of building strong communities and enhancing the quality of life for individuals and families. The Foundation is also interested in grassroots organizations that empower ordinary people to effectively participate in the political, social and economic processes, which affect their lives.

Education

The Stocker Foundation believes every student should have equal opportunity to achieve his/her full potential, and be prepared to competently participate in an increasingly intercultural society. The Foundation supports organizations that take an active role in reexamining educational practices and how they affect the learning of students. In addition, programs that focus on achievement in basic academic and prevocational skills are of interest, as well as programs and services for adult students who are striving to complete high school or earn a college degree.

Health

The Stocker Foundation supports affordable and quality healthcare systems that provide all individuals and families with information and access to quality medical attention. Organizations that provide direct medical services, equipment to those in need (with emphasis on programs that serve disadvantaged and underserved populations) are of particular interest.

Social Services

The Stocker Foundation supports organizations that provide direct services to individuals and families in crisis, as well as long-term efforts to help people to help themselves, ensuring a better quality of life and sustainable future for all. Providing for basic human needs and supporting preventative education are of particular interest.

Women's Issues

The Stocker Foundation supports programs that teach girls to grow into strong contributing members of society and encourages women to achieve their full potential. The Stocker Foundation recognizes that many of society's problems have a greater impact on women and girls, and that non gender-specific programs often do not meet their special needs.

Arts & Culture

TOTAL GIVING

1979
\$3,498,162
2003

In 2002–2003, the Foundation funded 25 projects for a total of \$201,000.



The Art Room

Arizona Opera **\$5,000**

Pima County, Arizona

To expose school aged children in grades K–6 to the world of opera through free in-school assemblies

Arizona Theatre Company **\$12,000**

Pima County, Arizona

Continued support of the *Student Matinee Program*, which provides underserved youth with education and opportunities to attend live theater performances

The Art Room **\$7,500**

Pima County, Arizona

To provide expressive arts programming and mentoring relationships for children and youth who are homeless or residing in transitional housing

Arts Genesis **\$5,000**

Pima County, Arizona

Continued support of the *ArtsBuild Program*, which serves students from diverse cultural backgrounds, including the Yaqui community, by integrating arts education with academic curriculum through visual and performing arts classes, residencies and special performances

Borderlands Theater **\$4,000**

Pima County, Arizona

In support of *Educational Outreach Programs* for students, with special emphasis placed on at-risk Hispanic youth, providing opportunities to learn all aspects of theatrical production



Lyric Opera Cleveland

Branigan Cultural Center Foundation \$10,000

Doña Ana County, New Mexico

To support the continuation and expansion of *Another Planet: Voices from Las Cruces*, an ongoing program geared toward middle school students encompassing theater, visual arts, and creative writing

Catalina Chamber Orchestra \$2,500

Pima County, Arizona

To support the continuation of the *Young People's Concert Under the Stars*, a free concert celebrating the ethnic diversity of Tucson

Cleveland Opera \$7,500

Lorain County, Ohio

To support the continuation of the *Music! Words! Opera!* curriculum, a program that allows Lorain County elementary and middle school students to learn about and create their own operas

Cleveland Public Theatre \$10,000

Lorain County, Ohio

Toward *Act Now! Lorain*, an interactive dramatic arts education program designed to foster creative expression and self-knowledge serving disadvantaged youth and women-in-transition

Doña Ana Arts Council \$15,000

Doña Ana County, New Mexico

Toward the provision of a community-based arts education program for underserved school aged youth

Great Lakes Theater Festival \$10,000

Lorain County, Ohio

To support the continuation of educational programs for school aged youth (i.e. *Student Matinee Series*, *Surround*, and *School Residency Programs*)

Las Cruces Symphony Association \$10,000

Doña Ana County, New Mexico

To support the expansion of *Education Outreach Programs* for school aged youth

Lyric Opera Cleveland \$5,000

Lorain County, Ohio

Continued support of *OVERTURE* and *Community Opera Connection*, two educational programs that introduce students to live theater performance and allow them to interact with and learn from singers and musicians

MAD Factory \$10,000

Lorain County, Ohio

Toward participant scholarships with special emphasis on African-American youth in a year-round program that offers dance, drama and puppetry programs for school aged youth between the ages of 6 and 18

Messengers of God \$5,000

Lorain County, Ohio

To support afterschool and summer programs for underserved school aged youth in the areas of dance, mime, and drama

Museum of Contemporary Art Cleveland \$5,000

Cuyahoga County, Ohio

To provide a link between contemporary art and middle school students through the *School-to-Museum Program* that provides interactive tours, artist residencies, and family day programs

Northern Ohio Youth Orchestra **\$10,500***Lorain County, Ohio*

To support the establishment of a Chamber Music Program (NOYO *Chamber Ensembles*) for youth in grades 4–12

Oberlin Choristers **\$4,000***Lorain County, Ohio*

To provide scholarship assistance to low-income families, affording underserved children and youth the opportunity to participate in the highest quality choral music education and performance opportunities

Ohio Dance Theatre **\$15,000***Lorain County, Ohio*

To enhance the organization's ability to reach out and promote performance schedules and dance classes

Ohio Humanities Council **\$5,000***Lorain County, Ohio*

Toward the implementation of *Ohio Chautauqua 2003*, a living history program providing family-style education and entertainment as part of the Ohio Bicentennial celebration

Stocker Humanities and Fine Arts Center **\$10,000***Lorain County, Ohio*

To support the 2002–03 performance season of music, film, theater, and dance

Tucson Children's Museum **\$5,000***Pima County, Arizona*

To support the *Early Childhood Care and Learning Collaboration*, providing free museum group discovery tours to low-income preschool children

Tucson Symphony Orchestra **\$10,000***Pima County, Arizona*

Toward classical music education programs for 16,000 preschool through high school students

UApresents **\$6,000***Pima County, Arizona*

Continued support of the *School Time Matinee Program*, presenting Baroque and classical music to students in grades 7–12

Young Audiences of Santa Cruz County **\$12,000***Southern Arizona*

To support the in-school arts education programs serving students living in rural, ranching, and border communities

*Oberlin Choristers*

Community Needs

TOTAL GIVING

1979
\$1,743,956
2003

In 2002–2003, the Foundation funded 13 projects for a total of \$146,320.



Elyria Parks and Recreation Department

Business Volunteers Unlimited **\$5,000**

Lorain County, Ohio

To support the organization’s efforts to recruit volunteers from area businesses to enhance the leadership and management capabilities of more than 600 participating nonprofits

Community Foundation of Southern New Mexico **\$15,000**

Doña Ana County, New Mexico

To support the organization’s desire to build capacity and to increase the provision of direct services to area nonprofits and donors

Deaf and Deaf-Blind Committee on Human Rights **\$3,500**

Lorain County, Ohio

Toward the *Interpreter Fund for Human Rights*, which enables deaf and deaf-blind individuals to participate fully in nonprofit events and meetings

Direct Action for Central Lorain CDC **\$10,000**

Lorain County, Ohio

To support economic revitalization efforts and other related activities identified in the comprehensive Community Plan

Elyria Parks and Recreation Department **\$8,500**

Lorain County, Ohio

Toward the renovation of *The Old Bathhouse* into a fully functioning nature center at Cascade Park

Local Initiatives

Support Corporation (LISC) \$10,000

Lorain County, Ohio

Toward the *Lorain County Operating Support Program*, which serves as a bridge between private and public sectors and community development corporations that serve low and moderate-income communities

Northeast Ohio Alliance for Hope \$5,000

Lorain County, Ohio

Strengthening the organization’s base of congregations with a goal of establishing policies and practices that bring justice and equality to all

Second Harvest Food Bank of North Central Ohio \$11,913

Lorain County, Ohio

Toward warehouse and facility improvements that will allow the organization to better serve individuals and families

South Elyria Neighborhood Development Corporation \$5,000

Lorain County, Ohio

Toward the revitalization efforts of several neighborhoods in the southernmost area of Elyria

South Lorain Community Development Corporation \$15,000

Lorain County, Ohio

To support efforts that are designed to transform neighborhoods and revitalize local business opportunities in South Lorain

Southeast Arizona Food Bank \$32,407

Southern Arizona

Toward the establishment of a fully functioning soup kitchen that will serve the needs of disadvantaged individuals and families in rural Arizona

WECO Fund, Inc. \$15,000

Lorain County, Ohio

Continued support of the *Lorain County Individual Development Account Program* (LIDA) empowering low and moderate income residents toward home ownership or small business start-up

West Seattle Food Bank \$10,000

King County, Washington

Toward distribution of food, baby supplies, and other necessities to low-income families



Southeast Arizona Food Bank

Education

TOTAL GIVING

1979
\$4,465,026
2003

In 2002–2003, the Foundation funded 37 projects for a total of \$229,550.



Chihuahuan Desert Nature Park

Access Program **\$15,000**

Lorain County, Ohio

To support high school advisory services, long-term mentoring and data analysis that promotes post-secondary education

Amherst Historical Society & Sandstone Museum Center **\$1,500**

Lorain County, Ohio

To support historical conservation and education initiatives through the use of appropriate research software (i.e. *Past Perfect*)

Arizona State Museum **\$10,000**

Pima County, Arizona

In support of the *School Program Expansion Initiative*, a program that will make ASM educational programs more accessible to Tucson-area school children and teachers

Chihuahuan Desert Nature Park **\$6,550**

Doña Ana County, New Mexico

In support of the *Schoolyard Desert Discovery Project*, a hands-on study of weather, soil, plants, and animal life for school aged youth

City Club of Cleveland **\$1,500**

Lorain County, Ohio

To support the inclusion of Lorain County high school students in the *Youth Forum Series*, a lunchtime speaker series for which students select topics, recruit speakers and produce the event



*Cleveland 2003
International Science & Engineering Fair*

**Cleveland 2003 International
Science & Engineering Fair** **\$5,000**

Lorain County, Ohio

To offset the cost of bus transportation for Lorain County students to attend the 2003 *International Science and Engineering Fair*, the world's only science project competition for students in grades 9–12

Cleveland Museum of Natural History **\$6,400**

Cuyahoga County, Ohio

To support *Savage Ancient Seas*, a traveling exhibit that highlights creatures that ruled the seas 70-million years ago

Cleveland Reads **\$5,000**

Cuyahoga County, Ohio

Toward the implementation of a literacy initiative, *Turning the Page*, a program dedicated to raising the academic achievement of at-risk adolescents throughout northeast Ohio

Crestwood Elementary School **\$5,000**

Lorain County, Ohio

To support the implementation of phase one of Crestwood Elementary School's outdoor education and playground plan

Educational Service Center of Lorain County **\$5,000**

Lorain County, Ohio

To support the continuation of *Lorain County Reads*, a program that provides adult volunteer reading tutors for elementary school children

Elyria Public Library – West River Branch **\$2,000**

Lorain County, Ohio

Toward the purchase of updated reference materials for the *Nonprofit Information Center*, an area of the library designed to provide nonprofits with information about fundraising, capacity building and general operations

Friends of the Patagonia Library **\$5,000**

Southern Arizona

To support the growth of a permanent endowment to ensure support for the library's ongoing services and programs for the community

Great Lakes Science Center **\$2,500**

Cuyahoga County, Ohio

In support of the second annual *WOW! Science Awards* that recognize outstanding science teachers throughout northeast Ohio

ideastream **\$12,500**

Cuyahoga County, Ohio

To support the broadcast of *Reading Rainbow*, an educational television program broadcast on WVIZ-TV25 and used as a teaching tool throughout northeast Ohio

Junior Achievement of Lorain County **\$5,000**

Lorain County, Ohio

To support the continuation of *JA in a Day*, a program where students in grades 1–6 learn basic business and economic concepts

Junior Achievement of New Mexico, Inc. **\$2,500**

Bernalillo County, New Mexico

To support the *Student Service-Learning Initiative*, that provides children in grades K-6 with an understanding of the free enterprise system

KUAT-TV \$10,500

Pima County, Arizona

To obtain *Reading Rainbow*, an educational television program used as a teaching tool in school districts throughout Pima County

La Pilita Association \$3,100

Pima County, Arizona

To purchase equipment for educational outreach programming, which offers art and history presentations, community workshops and tours for area students and residents

Las Cruces Public Schools Foundation \$11,500

Doña Ana County, New Mexico

Toward the *Literacy Partners = Children, Parents, Community Project* that will extend school library hours to meet the literacy and computer instruction needs of students and parents

Linden School (The) \$9,000

Lorain County, Ohio

Toward the *Intergenerational Child Care Program*, a collaboration with Elyria United Methodist Village

MAKE WAY FOR BOOKS \$7,500

Pima County, Arizona

Toward coordinating and organizing volunteers to provide story time and literacy assistance in multi-cultural libraries serving low-income children in daycare centers and preschools

National Inventors Hall of Fame \$7,500

Lorain County, Ohio

To support the continuation of *Camp Invention*, a hands-on summer science camp geared toward students entering grades 2–6

Native Seeds/SEARCH \$7,500

Pima County, Arizona

To provide continued support of the growout of native endangered seeds that provide food and ceremonial materials for the Tohono O’odham tribal communities

Oakwood Elementary School Parent Teacher Organization \$5,000

Lorain County, Ohio

Toward the creation of a developmentally appropriate play area at Oakwood Elementary School in Elyria

Oberlin Early Childhood Center \$10,500

Lorain County, Ohio

To support the development of a year-round literacy program that elevates the awareness of teachers and parents to the importance of children’s beginning literacy concepts and skills

Old Pueblo Archaeology Center of Tucson \$5,000

Pima County, Arizona

To provide continued support for the *OPEN2 Program*, an educationally enriching archeology discovery program

Reach Out and Read Greater Cleveland \$5,000

Cuyahoga County, Ohio

Toward the promotion of pediatric literacy through the distribution of age-appropriate books to more than 22,000 children living in Greater Cleveland during sick-and-well-baby visits



National Inventors Hall of Fame



Treehouse

Scholastic Games **\$1,500**
Lorain County, Ohio
 Continued support of *Scholastic Games*, a radio quiz show for students ages 14–18

Southern New Mexico
Natural History Foundation **\$3,000**
Doña Ana County, New Mexico
 To support the continuation of *Nature Camp 2003* for school aged youth

StrengthBuilding Partners **\$10,000**
Pima County, Arizona
 Toward the implementation of a *StrengthBuilding Institute*, providing monthly coaching to teachers at the Alternative Center, a year round school for at-risk youth within the Sunnyside Unified School District

Therapeutic Riding of Tucson **\$7,000**
Pima County, Arizona
 To enrich the lives of youth with special needs through the use of therapeutic equine-related activities

Town Hall of Cleveland **\$1,500**
Lorain County, Ohio
 Continued support of the *Student Scholarship Fund*, which allows high school juniors and seniors to attend one lecture and directly pose questions to a prominent speaker

Treehouse **\$10,000**
King County, Washington
 To provide one-on-one professional tutoring to disadvantaged foster children through the *Treehouse Tutoring Program*

Washington Literacy **\$5,000**
King County, Washington
 To support enhancement of the *Literacy Hotline* and to create a Web site that will increase the organization's ability to reach and serve individuals

Westwood Junior High School **\$7,500**
Lorain County, Ohio
 Toward the development and implementation of a community-based education program for multi-handicapped students and expenses associated with the Ohio School Board Association Educational Fair

Wingspan **\$4,500**
Pima County, Arizona
 Toward brochures and new library materials for the *Wingspan Information and Referral Program*, serving gay, lesbian, bisexual and transgendered persons

Wright Flight **\$7,000**
Pima County, Arizona
 To support the continuation of *Educational Motivational Programs* that combine academic achievement with aviation for at-risk youth in grades 4–12

Health

TOTAL GIVING

1979
\$1,903,906
2003

In 2002–2003, the Foundation funded 13 projects for a total of \$210,632.



Echoing Hills Village Foundation

Alzheimer’s Association –

Desert Southwest Chapter

\$5,000

Pima County, Arizona

Toward the expansion of *Family Care Consultation*, a program offering bilingual services for families having difficulty with an Alzheimer’s sufferer

Cleveland Area Alzheimer’s Association

\$15,000

Lorain County, Ohio

Toward the establishment of a satellite office in Lorain County so that the organization can increase its provision of direct services to families touched by Alzheimer’s disease or related dementias

Community Health Partners Foundation

\$25,000

Lorain County, Ohio

Continued support of *Parish Nursing*, a program that promotes healthy lifestyles and provides disease prevention to underserved members of the community

Direct CareGiver Association

\$12,500

Pima County, Arizona

To support the *Comprehensive Model Training Program* for caregivers and certified nursing assistants, offering low-income women supportive instruction in all essentials of care for aging or disabled individuals

Easter Seals New Mexico

\$5,000

Bernalillo County, New Mexico

To support *The KARS/Special KARS – Kids Are Riding Safe Program*, a comprehensive child passenger safety education and car seat give-away program for low-income parents and children

Echoing Hills Village Foundation

\$15,000

Lorain County, Ohio

Toward the purchase of equipment that will ensure the safety of the organization’s staff and residents living in group homes



S.E.T. for Health New Mexico

El Rio Community Health Center **\$50,000**

Pima County, Arizona

To support the expansion of community-based health care to medically underserved children and youth in Pima County through the pharmacy-based Diabetes clinic and the *Health-e-Arizona Program*

Elyria Club of Negro Business and Professional Women **\$2,500**

Lorain County, Ohio

To support the continuation of the *Tri-City Lupus Project*, providing health education and support for Lupus sufferers

Jewish Family & Children's Services of Southern Arizona **\$5,000**

Pima County, Arizona

Continued support of the *Tucson Loan Chest*, an agency which loans medical equipment to uninsured and underinsured individuals

Lorain County Free Clinic, Inc. **\$30,000**

Lorain County, Ohio

To support the *Prescription Drug Program*, providing medication to individuals without access to health insurance

Mesilla Valley Hospice, Inc. **\$25,000**

Doña Ana County, New Mexico

To support the expansion of *La Posada*, which aids terminally ill individuals and their families

S.E.T. for Health New Mexico **\$10,000**

Doña Ana County, New Mexico

Toward the *Healthwise Handbook* for low-income families

Southern Arizona AIDS Foundation **\$10,632**

Pima County, Arizona

To support all activities related to the volunteer resource department including recruitment, training, placement and direct services to clients

Social Services

TOTAL GIVING

1979
\$7,212,335
2003

In 2002–2003, the Foundation funded 53 projects for a total of \$534,603.



Barrett Foundation, Inc.

Albuquerque Health Care for the Homeless, Inc.

\$5,000

Bernalillo County, New Mexico

To facilitate outreach and direct service linkages to homeless adults living in camps in semi-rural areas

All Faiths Receiving Home

\$6,500

Bernalillo County, New Mexico

Toward the purchase of a replacement van that will support the provision of direct services to abused and neglected children

Alternatives in Housing

\$2,000

Pima County, Arizona

Toward needs assessment and data compilation for programs for persons with significant disabilities

American Red Cross –

Lorain County Chapter

\$10,000

Lorain County, Ohio

To enhance the organization’s ability to reach all residents through increased marketing efforts

Arizona’s Children Association

\$10,000

Pima County, Arizona

To support the *Parent Connection*, a program dedicated to preventing risk factors associated with child abuse and neglect

Barrett Foundation, Inc.

\$15,000

Bernalillo County, New Mexico

To support the relocation and expansion of *The Barrett House*, an emergency shelter that serves homeless women and children



Big Brothers Big Sisters of Tucson

Bellefaire Jewish Children's Bureau \$20,000

Lorain County, Ohio

To augment services in Lorain County by hiring a bilingual therapist and implementing a therapeutic foster care program

Bernalillo County Council

PTA Clothing Bank \$5,000

Bernalillo County, New Mexico

To support the efforts of a clothing bank that provides essential clothing items to 2,551 public school students in grades K-12

Big Brothers Big Sisters of Lorain County, Inc. \$15,000

Lorain County, Ohio

To support the implementation of an ongoing strategic plan that includes expanding core services and marketing

Big Brothers Big Sisters of Tucson \$15,000

Pima County, Arizona

Continued support of *Campus Pals*, a mentoring program that pairs University of Arizona students with disadvantaged youth

Bisbee Coalition for the Homeless, Inc. \$5,000

Southern Arizona

Toward the *Prevention and Emergency Assistance Program*, which provides direct aid to households threatened with or experiencing homelessness

Boy Scouts of America – Heart of Ohio Council \$14,000

Lorain County, Ohio

To support the continuation of the *Juvenile Diversion Program*, which allows youth in the juvenile court system to erase minor offenses through participation in traditional Boy Scout activities, mentoring and community service

Boys & Girls Clubs of Lorain County \$25,000

Lorain County, Ohio

Toward the implementation of an *InterClub Program* that will allow the organization to more efficiently coordinate activities between Oberlin and Lorain clubhouses serving disadvantaged youth

Boys & Girls Clubs of Tucson \$5,000

Pima County, Arizona

To support a *Keystone Club Program* at two metro-Tucson clubhouses for adolescents ages 13-18 so that they may develop a sense of belonging, competence, influence, and usefulness

Casa de Esperanza, Inc. \$7,000

Pima County, Arizona

To support the *Building Memories Together Program*, an intergenerational daycare program that provides significant opportunities for interaction between community youth and seniors

Casa de los Ninos \$7,500

Pima County, Arizona

To support *Child Abuse Prevention Through Legal Education*, *Parent Information Referral Line*, and the *Tucson Safe Baby Project*, all programs which discourage child abuse and neglect

Catholic Charities Services /Lorain County \$15,000

Lorain County, Ohio

To support the continuation of the *Center for the Prevention of Youth Violence*, a program that assists Lorain City School students and faculty to recognize and respond to the consequences of violence while promoting violence prevention

Children's Hunger Alliance \$5,000

Lorain County, Ohio

Toward the *Feeding Hungry Minds and Bodies of Lorain County Children*, a program that provides meals to low-income school aged children through the *School Breakfast* and *Summertime Food Service Programs*

Cleveland Hearing & Speech Center \$15,000

Lorain County, Ohio

To support services that are not reimbursable (i.e. case management, ADA advocacy, sign language instruction and information & referral services)

Conflict Resolution Center of the West Shore, Inc. \$10,000

Lorain County, Ohio

To support the *Juvenile Diversion Mediation Program* in Lorain County, a year-round program for at-risk children and adolescents



Downtown Emergency Service Center

Downtown Emergency Service Center \$10,000

King County, Washington

Toward a *Supportive Housing Program*, which provides stable, long-term (transitional and permanent) housing for disabled, formerly homeless adults

Family Counseling Agency \$10,000

Pima County, Arizona

To support the *Children of Changing Families & Judicial Supervision Program* for children whose parents are experiencing or have experienced divorce or separation

Family Services \$7,500

King County, Washington

To support *Homeless Children's Services*, a comprehensive program that includes *Morningsong*, a free specialized daycare for homeless children, and the *Baby Boutique*, a source of free clothing and essentials to homeless children

Good Neighbor Alliance \$5,000

Southern Arizona

To support the establishment of an emergency shelter for families and single men

Habitat for Humanity – Greater Albuquerque \$4,000

Bernalillo County, New Mexico

To support the production and distribution of the *Homeowners Resource Guide*

Hopelink \$7,000

King County, Washington

To support the organization's efforts to help individuals and families become self-sufficient through the *Emergency Services Program*, which provides food, clothing, eviction prevention, healthcare, life skills classes and referral to more than 2,000 families each week

House of Neighborly Service \$10,000

Pima County, Arizona

Toward physical plant improvements and the *Jump Start Basketball Program* for at-risk adolescents ages 11–17

Jardin De Los Niños \$9,828

Doña Ana County, New Mexico

Toward the provision of increased childcare services to homeless children ages 0–6

Las Cruces Affordable Housing, Inc. \$20,000

Doña Ana County, New Mexico

To support *Casa de Corazones*, a project that will provide permanent housing for mentally ill persons

Learning For Life \$9,775

Pima County, Arizona

Toward the continuation of *Learning For Life*, a character education program offered at all elementary schools in the Vail School District

Lorain County Urban League, Inc. \$15,000

Lorain County, Ohio

Toward restructuring both the *Youth Education and Employment Programs* that provide mentoring, tutoring, scholarship assistance, college tours, and an annual youth summit to African-American and other economically disadvantaged persons

Lorain United Methodist Ministries \$10,000

Lorain County, Ohio

Toward *Camp I.D.E.A.S.*, a summer camp that provides recreational activities and continued enrichment for special needs students and their typical peers, utilizing teens as counselors and aides

Mesilla Valley Community of Hope \$16,750

Doña Ana County, New Mexico

To support the *Homeless Work Program* and supportive homeless services for men, women, and families throughout Doña Ana County

Mobile Meals of Tucson \$8,000

Pima County, Arizona

Toward the *Replacement Computer Program* that will facilitate delivery of special diet meals twice daily to homebound elderly and disabled persons more efficiently

North Ridgeville

Community Care Committee \$10,000

Lorain County, Ohio

Toward the *Household Management Fundamentals Program*, providing food, emergency financial assistance and clothing to families in need

Northeast Ohio Coalition for the Homeless \$5,000

Lorain County, Ohio

Toward the expansion of the *Cleveland Community Voice Mail Program*, providing phoneless and homeless individuals with 24-hour voicemail

Northwest Interfaith Center \$5,000

Pima County, Arizona

To support physical plant improvements that will allow for increased services to home-bound elderly and disabled, and economically disadvantaged families and individuals (i.e. Food Services, Interfaith CareGivers and Telecare)

Open Inn, Inc. \$15,000

Pima County, Arizona

Toward the *Shelter Care Program*, providing short-term care for homeless runaway youth and youth in crisis

Parent Aid –

Child Abuse Prevention Center, Inc. \$10,000

Pima County, Arizona

Toward the continuation of case management services (i.e. abuse prevention) to northwest Pima County

Pathways Counseling and Growth Center \$5,000

Lorain County, Ohio

Toward the *Women Helping Women Program*, providing mental health counseling, parenting training and skills for reentry into the workforce

Roadrunner Food Bank of New Mexico \$5,000

Bernalillo County, New Mexico

To support the *Food for Kids Program*, which provides take-home child-friendly, nutritious food items in backpacks to low-income elementary school children

SaddleBrooke Community Outreach, Inc. \$3,750

Pima County, Arizona

To support *Kids' Closet*, a clothing bank that provides school wardrobes for impoverished children

Salvation Army – Elyria \$5,000

Lorain County, Ohio

To provide continued support for the *Community Youth Center Program*, providing afterschool and summer activities for at-risk youth

Samaritan Counseling Center \$10,000

Bernalillo County, New Mexico

To implement the *Samaritan Center for Changing Families Program* for divorcing families

Seattle Emergency Housing Service \$5,000

King County, Washington

To support the *Life Skills Program*, which teaches basic skills to adult members of homeless families

Sharehouse (The) \$10,000

King County, Washington

To support the *Houses Into Homes Project*, a program that provides household furnishings and wares to families transitioning into permanent housing

Southern Arizona

Children's Advocacy Center \$20,000

Pima County, Arizona

To support the provision of clinical services for child victims of abuse through crisis intervention, advocacy, and evidence collection

Tu Nidito Children and Family Services \$11,000

Pima County, Arizona

Toward the comprehensive bereavement and grief support program for children and their caregivers who are grieving the death of a loved one

Tucson Urban League, Inc. \$15,000

Pima County, Arizona

To support the *Tucson Urban League Childhood Learning Centers'* implementation of a newly structured age-appropriate curriculum

Vocational Guidance Services, Inc. \$5,000

Lorain County, Ohio

Toward the expansion of the *Computer Skills Training Program* at the VGS Elyria Center, serving adults with significant disabilities

Volunteer Action Center of Greater Lorain County \$10,000

Lorain County, Ohio

To support *Project STRIVE* and *VOLUNTEENS* programs for at-risk youth

World Care \$25,000

Pima County, Arizona

To support the *Tools Programs; Tools for Schools program*, providing school furniture, books, computers, musical instruments, art supplies and school supplies to children and teachers

Youth Challenge \$5,000

Lorain County, Ohio

Continued support of the Lorain County Project providing sports and recreational activities for children with physical challenges



Ben's Bells, Tu Nidito Children and Family Services

Women's Issues

TOTAL GIVING

1979
\$1,916,039
2003

In 2002–2003, the Foundation funded 14 projects for a total of \$362,500.



Girl Scouts of Erie Shores

Arizona Women's Cancer Network **\$5,000**

Pima County, Arizona

Toward Spanish translation services for Hispanic women at the 3rd annual Cancer Awareness and Treatment Conference

City Mission **\$10,000**

Cuyahoga County, Ohio

To support the renovation and expansion of *Laura's Home*, a shelter that offers comprehensive programming for homeless women and children

Girl Scouts of Erie Shores **\$200,000**

Lorain County, Ohio

To support the renovation of *Camp Timberlane*, an outdoor center used for troop overnight and day camping, summer resident camp, day events, programs, and volunteer training

Home Repair Resource Center **\$5,000**

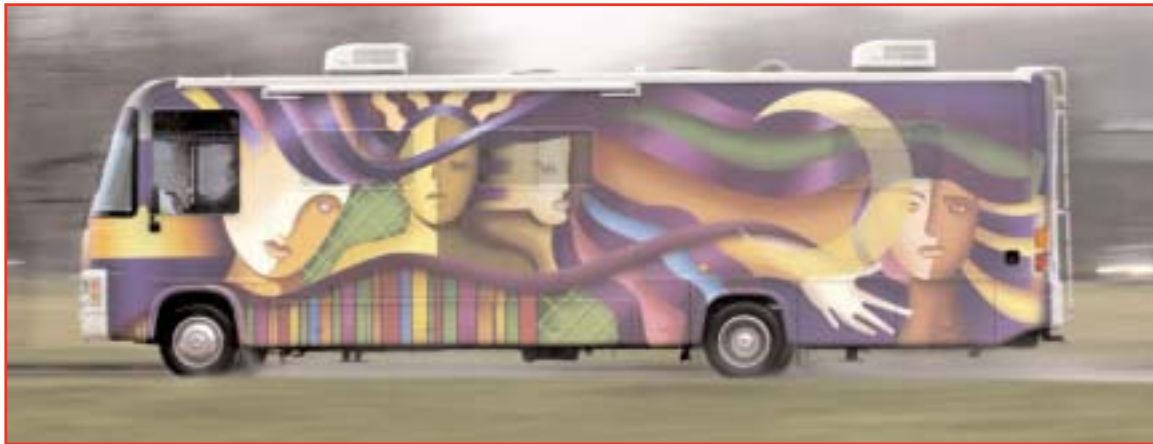
Cuyahoga County, Ohio

To support the *Home How-To Fund*, providing support for women who seek to learn basic repair skills and to become more knowledgeable about maintaining their homes

House of Hope Domestic Crisis Shelter **\$20,000**

Southern Arizona

Toward the purchase and installation of increased security measures at the *House of Hope Domestic Crisis Shelter* in Douglas



POWER BUS, Lorain County Safe Harbor/Genesis House*

Lorain County Safe Harbor/Genesis House \$37,500

Lorain County, Ohio

Toward the purchase of a modified recreational vehicle the POWER BUS (Providing Our Women Education Resources — Bringing U Safety) to ensure the organization's ability to impact rural and other hard-to-reach populations

Merrick House \$10,000

Cuyahoga County, Ohio

Toward the continuation of the *Female Youth Mentoring Program* for adolescent girls ages 13–16

Native Images, Inc. \$10,000

Pima County, Arizona

Toward *Strengthening the Circle-Talking Circles*, providing domestic violence prevention and intervention services to urban Native American women

Women's Economic Self-Sufficiency Team \$10,000

Bernalillo County, New Mexico

To provide business training for low-income women who seek self-sufficiency through self-employment

Women's Link \$5,000

Lorain County, Ohio

To support the provision of mental health counseling services to students at Lorain County Community College

Women's Studies Advisory Council \$10,000

Pima County, Arizona

Toward building the endowment of the Women's Studies Advisory Council, enabling the department to increase graduate assistanceships, add stipends for students, and begin a visiting lecturer program

Women's Transition Project \$5,000

Southern Arizona

To support the long-term housing program serving at-risk homeless, low-income women and children

YWCA Elyria \$25,000

Lorain County, Ohio

To support the expansion of the *Women's Campus Program* through the *W.I.S.H. Project*, providing transitional housing for homeless single women ages 16–60 with disabilities and other special needs

YWCA Tucson \$10,000

Pima County, Arizona

To support the 2nd Annual *It's Time to Talk Youth Forum*, which promotes understanding and appreciation of diversity among middle school, high school, and college-aged youth

*Scott Shaw © Pub. 2003 The Plain Dealer.
All rights reserved. Reprinted with permission.

Information for Grant Seekers & Grant Submission Guidelines



Youth Challenge

As an initial approach, The Stocker Foundation appreciates the opportunity to discuss proposal ideas and to answer questions prior to any grant submission. Although guidelines are available for download at www.stockerfoundation.org initial contact with staff is preferred.

Who can Apply:

- The Stocker Foundation’s grantmaking is restricted by geography. Currently eligible are the communities located in Lorain County, Ohio; Pima County, Arizona; Bernalillo and Doña Ana Counties, New Mexico; King County Washington; and the San Francisco Bay Area.
- Organizations that have complied with their granting contract, including the submission of a final evaluation, are eligible to apply. The Stocker Foundation will consider one proposal per organization per the Foundation’s fiscal year. Proposals for future funding will not be accepted if an organization has failed to submit a final evaluation for a previous grant.

When to Apply:

Letter of Inquiry	Proposal Deadline	Board Decision	Evaluation Due By
April 3, 2004	May 15, 2004	August, 2004	August, 2005
July 2, 2004	August 15, 2004	November, 2004	November, 2005
October 25, 2004	December 15, 2004	March, 2005	March, 2006

Grant proposals and Letters of Inquiry must reach the Foundation no later than 5:00 p.m. (EST) on the stated deadline date.

When not to Apply:

- Any organization that has not previously submitted a proposal, received a declination the last time a proposal was submitted, or has not yet received IRS tax-exemption status. Those organizations must first submit a **Letter of Inquiry** (download at www.stockerfoundation.org).
- Proposal requests for the following are not accepted: annual campaigns, conferences, deficit financing/debt reduction, government services, individuals, loans, mass mailings, private or parochial schools, public school services required by law, religious exclusivism, research projects and tickets or advertising for fundraising activities. Proposals for capital requests are occasionally accepted when specific criteria is met.

How to Apply:

- Proposals must be specific to Stocker Foundation guidelines and include:
 - 1) Three copies: bound or expensively produced proposals are not necessary
 - 2) Stocker Foundation cover sheet (download at www.stockerfoundation.org)
 - 3) Proposal Format: 5-page maximum, using a 12-point font
 - a) One-page executive summary of the proposal
 - b) For Programmatic or Direct Service Requests, include **Parts I and II** from the Grant Guidelines
 - c) For Capacity Building, Capital Improvements or General Operating Requests, include **Parts I and III** from the Grant Guidelines
 - 4) IRS Determination Letter verifying tax-exempt status
 - 5) A copy of the final evaluation from the most recent grant awarded by The Stocker Foundation
 - 6) Supplemental materials should be included only if relevant to the proposal

Dates and format are in effect until December 31, 2004

Send completed grant requests to:

Patricia O'Brien, *Executive Director*
The Stocker Foundation
559 Broadway, 2nd Floor
Lorain, Ohio 44052

Grant Guidelines

Part I: Organizational Assessment

- Organizational history, mission and vision.
- Is there a strategic plan in place? Year adopted?
- Number of full and part time employees?
- Has the organization or any staff members received external recognition for excellence?
- Describe the organization's use of best practices in terms of service delivery.
- How many active volunteers are there? How are volunteers utilized?
- Provide a board list; include cumulative total of giving for the previous fiscal year. Was there 100% participation among board members?
- Describe the role of the board within the organization. Does the board share any major responsibilities with the executive director or other key personnel?
- Does the organization actively seek out opportunities for collaboration?
- What have been your organization's greatest strengths and challenges during the current year and projected for the next 3-5 years?
- Include a current fiscal year's general operating budget with year-to-date actual numbers.
- Will the organization end the current fiscal year with a balanced budget? If no, please explain.
- Does the organization have an endowment? If yes, what year was it established and what is the current fair market value?
- List the organization's major sources of revenue by percentage (must total 100%).

Part II: Programmatic or Direct Service Delivery

- Provide a brief description of the program or service to be delivered.
- Who will benefit from this program or service and how?
- What is the date the program/service is scheduled to begin? What is the frequency the program or service will be delivered over the next 12 months?
- Are any other organizations in the community offering a similar program or service? If yes, is there a possibility for collaboration?
- If the program or service requires an outside service provider, elaborate on that relationship as it relates to the program.

- If the program or service is education related, how does it address the state's standardized testing?
- Will the program or service be implemented using existing or new staff? What are their qualifications?
- How does the program or service fit within the existing mission of the organization? Is this considered a core program or service of the organization?
- Include a copy of the project budget. Document how Stocker Foundation funding will be used.
- What percentage of the project budget is designated for administrative overhead? If more than 25%, please explain.
- What other sources of funding are pending or committed? (List all sources of funding, dollar amount and date of notification).
- If the proposal is not funded as requested, how will the program/project be implemented?
- If the project will continue after grant funds have been expended, how will it be sustained?
- How will the program or service be evaluated?

Part III: Capacity Building, Capital Improvements or General Operations

- How were the board and staff involved in the process of identifying this requested need?
- What is the timeline of implementation?
- Are there any national standards or regulations applicable to this request?
- How does the project fit within the existing mission of the organization? Will this grant enhance a core program or service of the organization?
- Include a copy of the project budget.
- Document how funding will be used.
- If request is for equipment, include quotes. Address the plan to manage ongoing maintenance and/or insurance-related expenses.
- What other sources of funding are pending or committed? (List all sources of funding, dollar amount and date of notification).
- If the proposal is not funded as requested, what are next steps to insure implementation?
- If the project will continue after Stocker Foundation funds have been expended, how will it be sustained?
- What impact will this project have on the organization and population served?

Financials

Statement of Financial Position	September 30, 2003
ASSETS	
Cash	\$8,084
Recoverable excise tax	\$9,500
Investments at Fair Value:	\$40,709,085
Property and equipment, net of accumulated depreciation of \$34,448	\$21,307
Prepaid expenses	\$4,937
Other	\$72
Total Assets	\$40,752,985
LIABILITIES AND NET ASSETS	
Accounts payable	\$1,328
Grants payable	\$400,733
Accrued expenses	\$7,228
Unrestricted Net Assets	\$40,343,696
Total Liabilities and Net Assets	\$40,752,985
STATEMENT OF ACTIVITIES	
Revenues	\$7,887,048
Expenses	
Grants Authorized	\$2,130,614
Other Expenses	\$366,475
Total Expenses	\$2,497,089
Change in unrestricted Net Assets	\$5,389,959
Unrestricted Net Assets, beginning of the year	\$34,953,737
Unrestricted Net Assets, end of year	\$40,343,696

The summarized financial data includes accounts of The Stocker Foundation. Barnes Wendling, Certified Public Accountants, has issued an unqualified opinion. The financial statements of The Stocker Foundation were audited by Barnes Wendling. Copies are available for examination at the Foundation.

2002-03 GRANTS

